



## Many Features

- V-Nose – 30"
- 5,200# axles
  - GVWR listed at 9,990 lbs
- 6" tube frame with Cross Members @ 16" OC
- Tube wall posts @ 16" OC
- 8-1/2' wide
- 7-1/2' interior height

## Many Benefits

- V-Nose offers towing ease & generous space
- High Weight capacity with strong structure (6" tube & 16" OC w/ 3/4" engineered floors) allow user to load it up and structure supports with no bowing over time.
- Extra width and height provide for large interior volume in an easy to pull 16' trailer

***Intec inventories many trailers***

***We have – or can obtain – the ideal trailer to provide your business success***

*integrity*

*excellence*

*innovation*

*trust*

**303-833-6644**

**www.inteccorp.com**

Rev: 20240922



## Intec's Professional Grade Equipment

Engineered for High Productivity

Built-to-Last for High Value Generation

## FORCE<sup>®</sup>

Insulation Blowing Machines



## Pictures & Specifications



Front Passenger Side view  
12" extra height places interior at 7-1/2' tall



Front – 24" stone guard



Rear Passenger Side  
Black rims with stainless steel center caps



Rear – Insulated Cargo Doors with bar  
latch  
Chrome BezelLED lights



... it's the 'tec' inside that counts!

### Distributed by

Insulation Technology Corporation, d.b.a. Intec  
9251 Bruin Boulevard  
Frederick, CO 80504

[www.inteccorp.com](http://www.inteccorp.com)

phone: 303-833-6644  
[sales@inteccorp.com](mailto:sales@inteccorp.com)



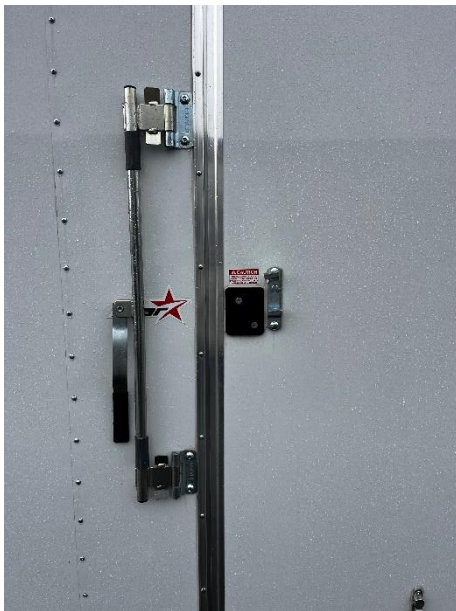
## Pictures & Specifications



Passenger side view with 36" wide door



60" Tipline Tube Tongue  
2-5/16" coupler  
Manual Jack standard; Electric optional



RV Latch & Bar Latch



Stepwell



... it's the 'tec' inside that counts!

### Distributed by

Insulation Technology Corporation, d.b.a. Intec  
9251 Bruin Boulevard  
Frederick, CO 80504



[www.inteccorp.com](http://www.inteccorp.com)

phone: 303-833-6644  
[sales@inteccorp.com](mailto:sales@inteccorp.com)

## Pictures & Specifications



Rear doors insulated and covered with vinyl

### Spacious Interior

- ✓ 12" extra height – 7-1/2' tall
- ✓ 8-1/2' wide
- ✓ 16" long + 30" V-nose
  
- ✓ 3/4" engineered wood floor
- ✓ Spare tire



... it's the 'tec' inside that counts!

### Distributed by

Insulation Technology Corporation, d.b.a. Intec  
9251 Bruin Boulevard  
Frederick, CO 80504



www.inteccorp.com

phone: 303-833-6644  
sales@inteccorp.com