



# cutter FORCE<sup>®</sup> MINI

Intec Part #'s:

- cutterFORCE<sup>®</sup>: 75100-12 Cutter
- clean-up tool: 75111-00

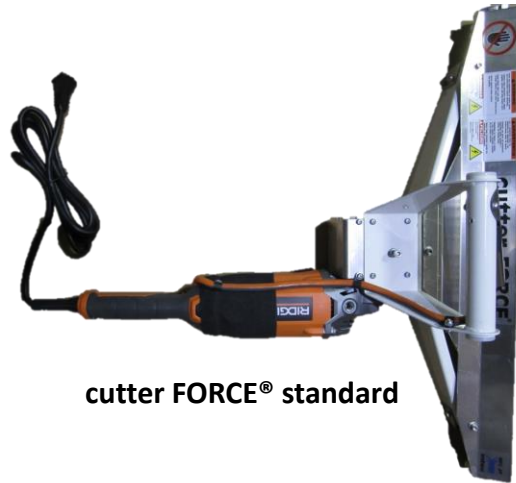
*Closed & Open Cell Wall Scarfing Tool*

The wall foam cutting tool designed for the needs of the Professional Contractor!

cutter FORCE<sup>®</sup> is one tool that has been designed to remove both closed cell *and* open cell foam. The MINI is designed for users desiring a 12" scarfing width allowing foam removal in tight areas.



cutter FORCE<sup>®</sup> MINI



cutter FORCE<sup>®</sup> standard

### Comparisons – Standard cutter FORCE vs. MINI

Attribute	Standard	Mini
Roller width	26-1/4"	12+"
Weight	20	17
Drive	belt	belt
# rollers	4	4

integrity

excellence

innovation

trust

303-833-6644

[www.inteccorp.com](http://www.inteccorp.com)

Rev: 20241103



## Pictures of the MINI

### Quick Clean up

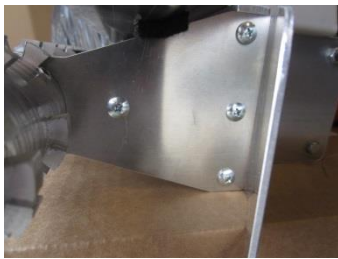
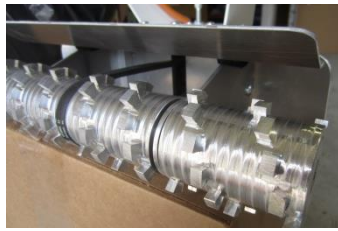
✓ Same teeth configuration as standard provides popcorn sized foam pieces:

☐ quick to pick-up.

☐ No dust

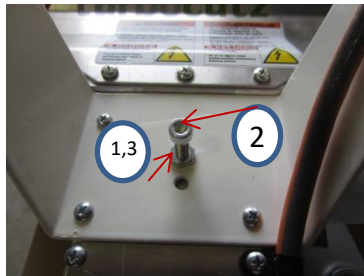
Ease to replace belt

1. Remove two screws holding Service Partners shield in place.
2. Remove 3 screws holding side support. Swing side support down.
3. Slide new belt over roller, side support, and into place on front pulley. Feed thru slot and onto drive pulley.



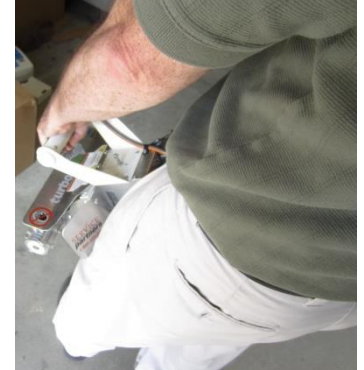
### Ease to adjust belt tension

1. Loosen 'jam' nut.
2. Adjust tension as required.
3. Tighten 'jam' nut.



## Safety

- ✓ Safety Switch requires two-handed operation.
- ✓ Safety Shield (one on each side) rests on leg preventing contact with roller.



- ✓ Drill Attachment accessory for spot removal (#75111-00).



**Additional SPF Items of Interest. Intec inventories these items** – typically ship w/ in 48 hours of order receipt

## Generators



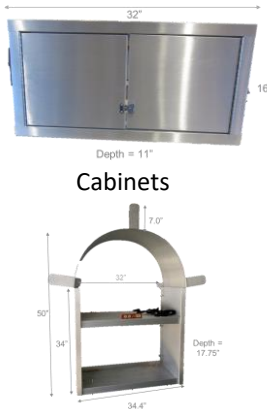
### Portable Generators

- ✓ 10 kW
- ✓ 12kW
- ✓ 16kW
- ✓ 22 kW

### Open Frame / Stationary:

- ✓ 22kW
- ✓ 30kW
- ✓ 50kW
- ✓ Single phase
- ✓ Three phase

Air Dryers & Compressors also



Cabinets

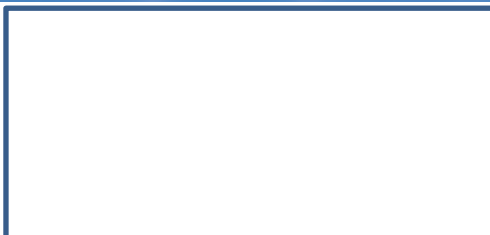


Hose Hoods



Shelving Units, drum stops, e\*Track, work centers, Safety Items

Distributed by



Manufactured by

Insulation Technology Corporation, d.b.a. Intec  
9251 Bruin Boulevard  
Frederick, CO 80504  
www.inteccorp.com

Phone: 303-833-6644  
info@inteccorp.com



... it's the 'tec' inside that counts!